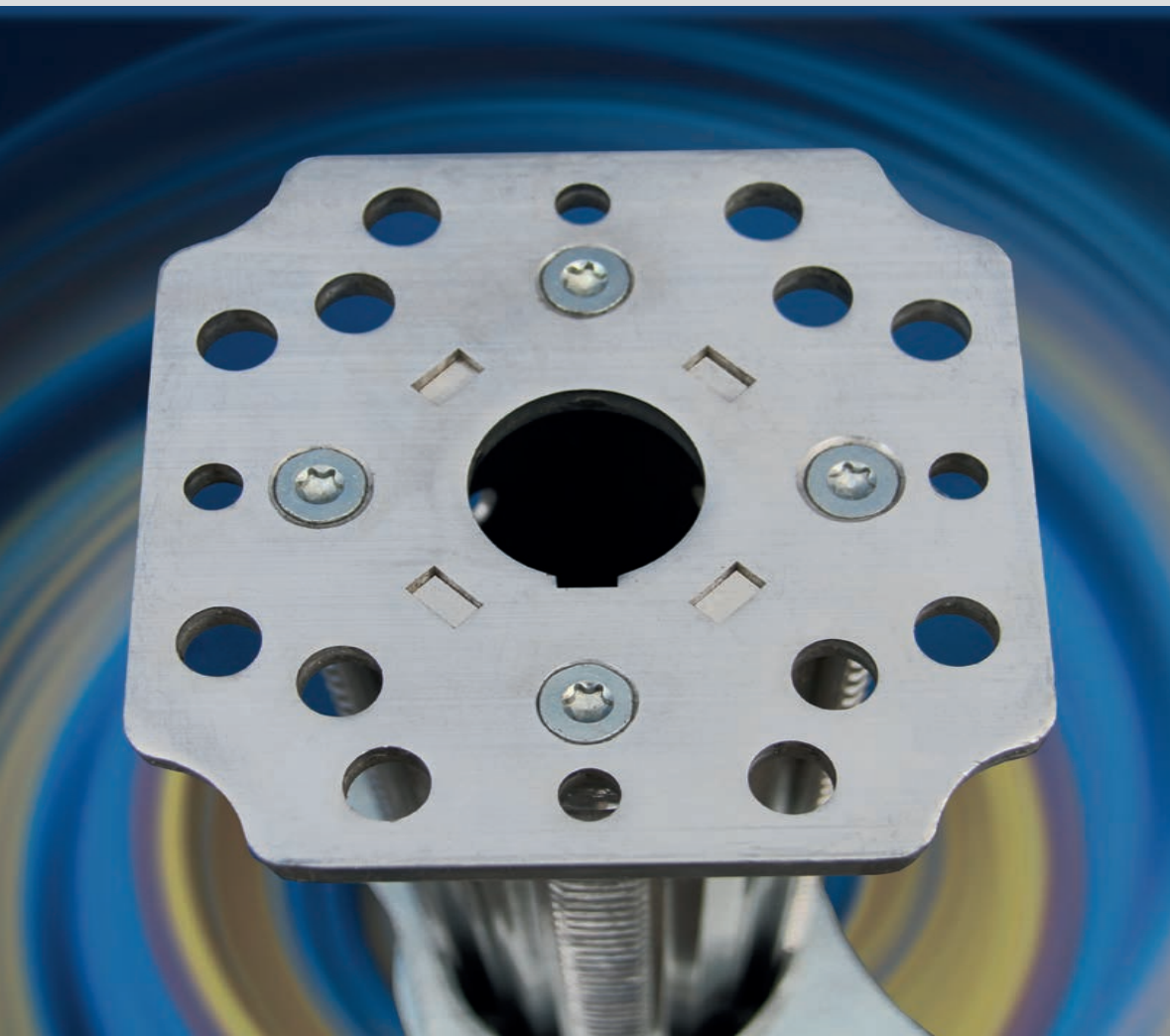


# Tobler Tower Heavy-Duty Props



- Heights of over 12m can be set up in seconds
- 6,25m extension length at only 31 kg net weight
- Quick assembly – maximum safety
- High load capacity – low net weight
- Replaceable, strong end plates



Swiss Engineering.  
Swiss Technology.

# Tobler Tower Heavy-Duty Props

The aluminium props for high loads.

## Simplify propping high loads

Lightweight Tobler Tower aluminium heavy-duty props enable fast, effortless and safe transport and assembly thanks to their low net weight.

The fast-running thread increases efficiency and prevents costs due to dented props.

Whether as a single prop or in combination with the Tobler Tower frame as a shoring tower: Tobler Tower heavy-duty props provide efficient and reliable support when heavy loads need to be propped up.

### Benefits

- At a 5 m extension length, more than 40 kN load capacity
- Prop lengths from 1,45 m to 6,25 m
- 6,25 m extension length at only 31 kg weight
- Replaceable, strong end plates
- Can be doubled to allow heights of over 12 m in a matter of seconds
- Fast length adjustment and integrated length indication
- Fast-running thread
- Safe transport due to an integrated anti-fall protection
- Optimally stackable
- Custom colour (from 500 units)



# Tobler Tower Heavy-Duty Props

Setup.



35% time-saving thanks to a fast-running thread, self-cleaning

Fast wing nut, forged

Type A outer tube

Outer tube extension

Removable, strong end plates

# Tobler Tower Heavy-Duty Props

Type A – The aluminium props with extensions.

## TYPE A aluminium props

Article no.	Height, min.	Height, max.	Weight
84-T-110250	145 cm	250 cm	15,5 kg
84-T-110350	195 cm	350 cm	19,5 kg
84-T-110480	330 cm	480 cm	25,0 kg
84-T-110550	350 cm	550 cm	27,0 kg
84-T-110625	480 cm	625 cm	31,0 kg

## Extensions

Article no.	Height	Weight
84-T-110050	50 cm	3,5 kg
84-T-110100	100 cm	5,6 kg
84-T-110150	150 cm	7,8 kg
84-T-110200	200 cm	10,0 kg
84-T-110300	300 cm	14,4 kg



Typ A

## Permissible load capacity calculated according to EN 16031:2012

Article no.	84-T-110250	84-T-110350	84-T-110480	84-T-110550	84-T-110625
from	1,45 m	1,95 m	3,30 m	3,50 m	4,80 m
to	2,50 m	3,30 m	4,80 m	5,50 m	6,25 m
Pull-out element	top / bottom	top / bottom	top / bottom	top / bottom	top / bottom
(m)	Load (kN)	Load (kN)	Load (kN)	Load (kN)	Load (kN)
1,50	78 / 100	–	–	–	–
2,00	78 / 93	78 / 89	–	–	–
2,30	78 / 82	78 / 85	–	–	–
2,50	78 / 74	78 / 81	–	–	–
2,70		78 / 76			
2,90		78 / 72			
3,10		69 / 64			
3,30	–	60 / 57	78 / 79	–	–
3,50	–	52 / 50	78 / 76	80 / 80	–
3,70			78 / 69	80 / 80	
3,90			72 / 62	80 / 80	
4,10	–	–	60 / 56	80 / 80	–
4,30			51 / 50	68 / 65	
4,50	–	–	44 / 44	65 / 65	–
4,70			38 / 39	55 / 56	
4,80	–	–	36 / 36	48 / 49	49 / 45
5,00				44 / 45	48 / 43
5,20				37 / 38	44 / 40
5,40				33 / 33	40 / 37
5,50	–	–	–	31 / 31	38 / 36
5,60					36 / 34
5,80					32 / 31
6,00					29 / 28
6,25	–	–	–	–	25 / 24



# Tobler Tower Heavy-Duty Props

Extension elements – robust, fast, safe.

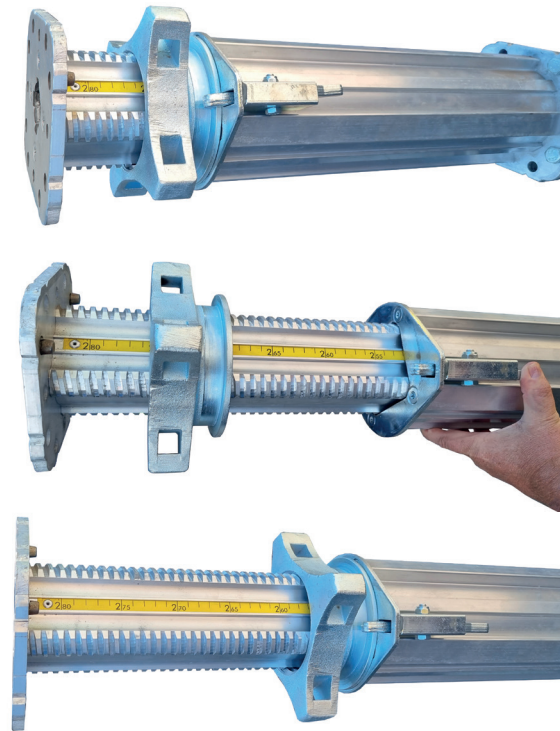


## Mechanism for more safety and speed

Extending a Tobler Tower heavy-duty prop to a specific size is very easy and is additionally supported by the integrated length indications.

The inner tube can be quickly extended to the required length using the spring-assisted release that is triggered by simply pushing it in by hand. The time for retracting the inner tube, e.g. for transport, is also kept to a minimum.

The core and distinctive feature of the Tobler Tower heavy-duty prop is the fast-running thread, which lets you work up to 35 % faster when turning the forged wing nut.



## Permissible load capacity-props restrained

Article no.	84-T-110250	84-T-110350	84-T-110480	84-T-110550	84-T-110625
from	1,45 m	1,95 m	3,30 m	3,50 m	4,80 m
to	2,50 m	3,30 m	4,80 m	5,50 m	6,25 m
Pull-out element (m)	restrained Load (kN)	restrained Load (kN)	restrained Load (kN)	restrained Load (kN)	restrained Load (kN)
1,50	130	–	–	–	–
2,00	130	130	–	–	–
2,30	130	130	–	–	–
2,50	115	116	–	–	–
2,70		110			
2,90		90			
3,10		80			
3,30	–	71	110	–	–
3,50	–	65	110	110	–
3,70			92	110	
3,90			77	99	
4,10	–	–	69	88	–
4,30			61	82	
4,50	–	–	55	73	–
4,70			49	65	
4,80	–	–	45	60	60
5,00				56	60
5,20				47	60
5,40				41	52
5,50	–	–	–	40	48
5,60					43
5,80					38
6,00					35
6,25	–	–	–	–	30

# Tobler Tower Shoring Towers

Type A – quickly combined.

## Type A shoring towers

The heavy-duty props are connected with double-frames to form a shoring tower.

Create short or longer distances between props using different frame lengths and thus achieve maximum safety for all load cases.



# Tobler Tower Frames

Type A – ideal for quick assembly.

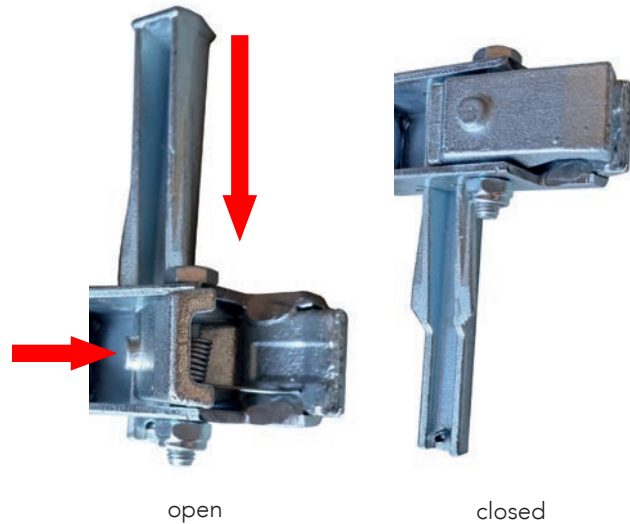


## Can be assembled by a single person

The double-frames are assembled in seconds via an internal spring mechanism.

A light push is all it takes, and the clamping wedge slides into the locked position by itself: the frame is secured.

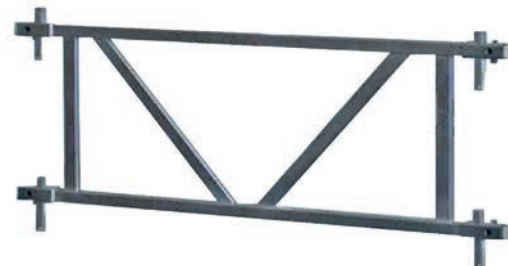
Unlike conventional connections, Tobler frames can be assembled by one person.



## Type A frames

- Steel

Article no.	Length	Height	Weight
84-T-210075	75 cm	50 cm	7,0 kg
84-T-210100	100 cm	50 cm	9,0 kg
84-T-210150	150 cm	50 cm	12,0 kg
84-T-210200	200 cm	50 cm	14,5 kg



84-T-210150



# Tobler Tower Heavy-Duty Props

Type M – set for high load from top to toe.

## Type M aluminium props - Extended connection options

Type M differs from type A. However, functionality and safety remain unchanged. The profile of the outer shell as well as the adapted shape of the thread allow frame elements to be fastened along the entire length of type M. A further advantage is the compatibility with products from other manufacturers due to identical connection dimensions.

Article no.	Height, min.	Height, max.	Weight
84-T-120250	145 cm	250 cm	15,3 kg
84-T-120350	195 cm	350 cm	19,2 kg
84-T-120480	268 cm	480 cm	24,6 kg
84-T-120625	430 cm	625 cm	31,2 kg



## Permissible load capacity calculated according to EN 16031:2012

Article no.	84-T-120250	84-T-120350	84-T-120480	84-T-120625
from	1,45 m	1,95 m	2,68 m	4,30 m
to	2,50 m	3,50 m	4,80 m	6,25 m
Pull-out element	top/bottom	top/bottom	top/bottom	top/bottom
(m)	Max. load (kN)	Max. load (kN)	Max. load (kN)	Max. load (kN)
1,50	73 / 76	–	–	–
1,95	67 / 76	88 / 87	–	–
2,10	64 / 75	83 / 87	–	–
2,30	61 / 70	73 / 86	–	–
2,50	60 / 64	64 / 83	–	–
2,70	–	59 / 78	86 / 71	–
2,90	–	56 / 72	72 / 70	–
3,10	–	53 / 65	63 / 69	–
3,30	–	50 / 55	55 / 68	–
3,50	–	43 / 45	50 / 64	–
3,70	–	–	46 / 58	–
4,30	–	–	35 / 38	56 / 44
4,70	–	–	27 / 29	49 / 43
4,80	–	–	25 / 27	46 / 42
5,20	–	–	–	41 / 37
5,80	–	–	–	25 / 28
6,25	–	–	–	20 / 22



Type M



# Tobler Tower Heavy-Duty Props

Type M – double connection is even better.



## Type M shoring towers - aluminium frame support along the entire length

The double frame of high-quality aluminium makes it easy for you to connect the heavy-duty props to form a shoring tower.

Frame lengths from 62 cm to 296 cm make it particularly easy for you to configure the spacing between the props with great flexibility.



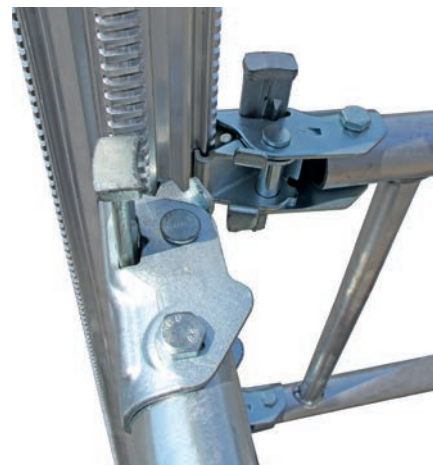
## Type M frames

- Aluminium

Article no.	Length	Height	Weight
84-T-220062	62 cm	50 cm	1,7 kg
84-T-220075	75 cm	50 cm	2,0 kg
84-T-220090	90 cm	50 cm	2,8 kg
84-T-220120	120 cm	50 cm	3,9 kg
84-T-220137	137 cm	50 cm	4,5 kg
84-T-220150	150 cm	50 cm	4,9 kg
84-T-220201	201 cm	50 cm	6,8 kg
84-T-220225	225 cm	50 cm	7,7 kg
84-T-220230	230 cm	50 cm	7,9 kg
84-T-220237	237 cm	50 cm	8,1 kg
84-T-220266	266 cm	50 cm	9,2 kg
84-T-220296	296 cm	50 cm	10,2 kg



84-T-220150



# Tobler Tower Frames

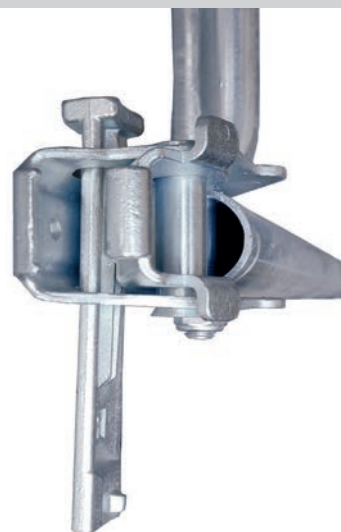
Selection from the range of accessories.

## Easy assembly

The prop frame can be easily and safely attached using vertically adjustable clamping wedges.

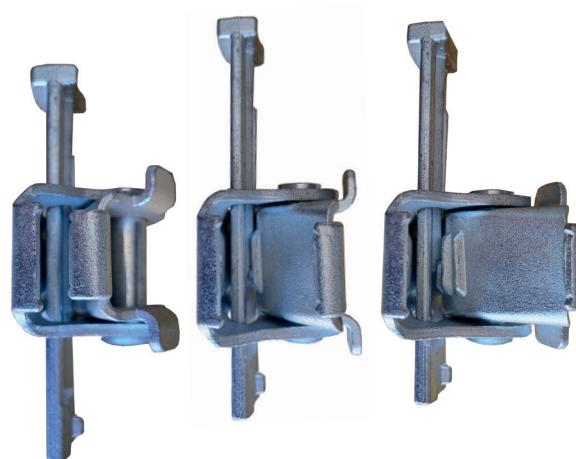
When locked, the clamping wedges hold the frames immovably in their freely selectable vertical position on the props.

In this way, locking and unlocking the prop frames is both easy and safe.



## Can be used for different props

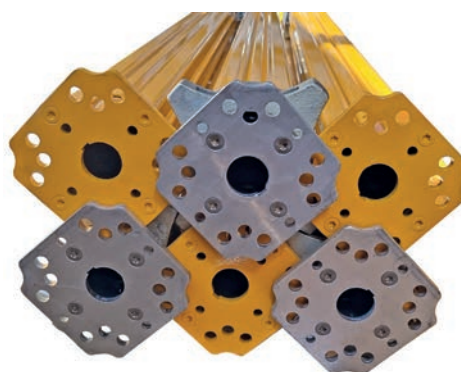
The frame can be used for different props at the same time by changing the position of the locking element. A total of 3 positions are possible.



## Compact stacking, easy to store

49 props can be stacked in storage racks and transported safely.

Article no.	Description	Weight
84-T-000625	Storage racks for aluminium props 6250	110kg
84-T-250480	Storage racks for aluminium props 2500 – 4800	58kg
84-T-120115	Storage racks for steel frames 120 × 80 × 115 cm	38kg



84-T-000625

# Tobler Tower Heavy-Duty Props

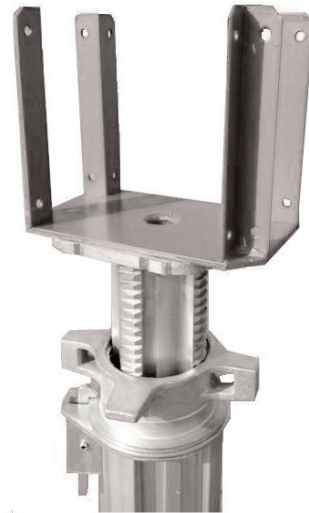
Type M – suitable for almost any prop.



## Four-way head FC 80 × 160

- Made of steel

Article no.	Weight
84-F-210038	2,4 kg



84-F-210038

## Tripod

- Made of steel

Article no.	Weight
84-T-260014	10,6 kg



84-T-260014

# Tobler Rent Rental Park

Formwork, props, accessories.

Rent  
me!

## More products from Tobler Rent Rental Park

### Tobler Flex – Props

- Load capacity: 20 kN / 30 kN EN standard
- Fast-running thread
- Faster regulation possible thanks to integrated measuring scale
- Increased service life thanks to patented foot reinforcement
- Guaranteed durability thanks to hot-dip galvanising, forged nut and 8 mm base and top plates
- Anti-crush and anti-fall protection ensure safe working conditions



### Tobler Deck – Ceiling Formwork

- Standard lengths: 90 cm, 180 cm
- Standard widths: 45, 60, 75, 90, 180 cm
- Flexible formwork elements: 55–90 × 90 cm, 55–90 × 180 cm
- Assembly from below by one person
- Great load-bearing capacity, up to 50 cm
- Powder-coated frame for unbeatable longevity
- Maximum manufacturing precision for perfect joint alignment
- Minimum cleaning effort



### Tobler Manu – Handset Formwork

- Standard heights 75, 100, 150 and 300 cm
- Element widths 25, 50 and 75 cm
- Forming without a crane
- Minimal net weight
- The lightest and, at the same time, strongest manual formwork



### Tobler Top – Wall Formwork

- Element heights 330, 270, 120 and 60 cm
- Element widths 240, 120, 90, 75, 72, 60, 55, 50, 45, 30 and 24 cm
- Shortened concreting time owing to a high load capacity of up to 80 kN/m<sup>2</sup>
- Hot-dip galvanised
- Compatible with common wall formwork



# Mission statement

Efficiency. Flexibility. Safety.



## Our mission statement

Together we implement solutions that are smart, available, secure and fair to all.

We support you to a reliable partnership of services, making you confident and secure in your work and developing new ideas and solutions – from planning through engineering to production.

As a team we will work together to find the best solution for you, ensuring the highest quality and safety of your work and the safety of the building.

With our products you can rely on our professional and reliable engineering and production quality.












Swiss Engineering.  
Swiss Technology.





# MATO Scaffoldings








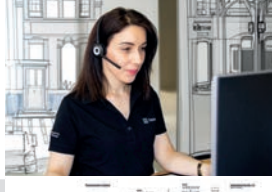
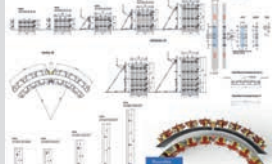
Efficiency. Flexibility. Safety.

<b>Facade scaffoldings</b>	<b>MATO 1</b> <b>MATO 2</b>	<b>MATO 53 CK</b> <b>MATO 54 Lay</b> <b>MATO 62 Ple</b> <b>MATO 65 Hün</b>	compatible with your existing scaffolding	
<b>All-in-one scaffolding system</b>	<b>MATO 3</b> <b>MATO 8</b>	<b>MATO Connect Road Bridge</b> <b>MATO Connect Bridge Beam</b>		
<b>Roof systems</b>	<b>MATO Pro</b>	<b>MATO Pro Anti-fall protection</b> <b>MATO Pro Temporary roof systems</b> <b>MATO Pro Walkway roofing</b>		
<b>Mobile scaffoldings</b>	<b>MATO R</b>	<b>MATO R Profi</b> <b>MATO R Pro</b> <b>MATO R One Man Tower</b> <b>MATO R Eco</b>		
<b>Work scaffolding on construction sites</b>	<b>MATO T</b>	<b>MATO T Stair towers</b> <b>MATO T Cable bridges</b> <b>MATO T Ramps for site access</b> <b>MATO T Scaffoldings for Concreting and Reinforcement</b>		
<b>Events</b>	<b>MATO E</b>	<b>MATO E Stages &amp; Tribunes</b> <b>MATO E Event-Service/Support</b> <b>MATO E R &amp; D</b>		
<b>Accessories</b>	<b>MATO Z</b>	<b>MATO Z Scaffolding accessories</b> <b>MATO S Safety accessories</b> <b>MATO B Construction devices</b> <b>Tobler Logistics</b>		
<b>Storage solutions</b>	<b>Tobler Storage</b>	<b>Tobler Cantilever Shelving</b> <b>Tobler Pallet Shelving</b> <b>Tobler Floor Special Shelving</b> <b>Tobler Lattice boxes / Steel boxes</b> <b>Tobler Pallets and Racks</b>		
<b>Services</b>	<b>Tobler Services</b>	R & D / Static calculations / CAD / Trainings / Customer solutions / Customized Solutions / Finance and Consulting Second hand / Trade-in old for new		

# Tobler Formwork

Enjoying industrialized construction.



Wall formwork	<b>Tobler</b> Wall	<b>Tobler</b> Top <b>Tobler</b> Manu Master Pro (Ringer) Master steel/ alu (Ringer) System 2000 steel/ alu (Ringer)	
Slab formwork	<b>Tobler</b> Sky	<b>Tobler</b> Deck <b>Tobler</b> Desk Slab Table/ Kart <b>Tobler</b> Flex AluDEK (Ringer) DEKplus Slab Table (Ringer)	
Individual formwork	<b>Tobler</b> I	<b>Tobler</b> Rex Girder wall formwork <b>Tobler</b> Varia Circular formwork <b>Tobler</b> Project Special formwork	
Shoring systems	<b>Tobler</b> H	<b>Tobler</b> Tower Heavy-Duty Props <b>Tobler</b> T22 Load-bearing system	
Work scaffolding on construction sites	<b>MATO</b> T	<b>MATO</b> T Reinforcement scaffolding <b>MATO</b> T Ramps for site access, <b>MATO</b> T Towers/ Cable bridges <b>MATO</b> R Pro/ Eco <b>MATO</b> R One Man Tower	
Engineering	<b>Tobler</b> Kit	<b>MATO</b> 3 <b>MATO</b> 8 <b>MATO</b> Connect Road Bridge <b>MATO</b> Connect Bridge Beam	
Accessories	<b>Tobler</b> Accessories	<b>Tobler</b> Formwork accessories <b>Tobler</b> Construction devices <b>Tobler</b> Logistics <b>Tobler</b> Storage solutions	
Services	<b>Tobler</b> Services	<b>Tobler</b> Rent <b>Tobler</b> ForU <b>Tobler</b> Care <b>Tobler</b> Revalued	
Digital services	<b>my Tobler</b>	<b>Tobler</b> Formwork planner <b>Tobler</b> Engineering	



## At home in Switzerland – anchored in Europe

We are developing the internationalisation of  
our product range.



**Order  
& advice**

[schalung@tobler-ag.com](mailto:schalung@tobler-ag.com)  
+41 71 886 06 37

**Online  
order**



« Our heavy-duty props are  
lightweight and offer handling and  
assembly speed advantages. »



**Eders Dici**

Sales field service  
Formwork

